

Compass Minerals Shaft Feeder Cables

SES' Special Projects were awarded a large package of works as part of a major infrastructure upgrade at the UK's largest producer of rock salt, Compass Minerals salt mine located in Winsford, Cheshire.

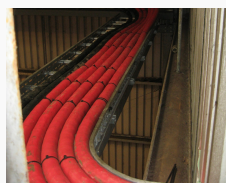
To increase salt production, a significant expansion of the power distribution system was required at the mine. our Special Projects team were engaged to provide specialist skills for the installation of high voltage cables (11kV and 3.3kV) from the substations located on the surface down into the mine workings via two shafts approximately 150m and 170m deep respectively.

SES' Special Projects provided the design, supply and installation of the fixing system required to secure the cables to the shaft wall and then installed the twelve high voltage cables with each cable length within the mine shaft weighing in excess of 1.5 tonnes.

As part of the project SES carried out a structural analysis of a warehouse building adjacent to one of the shafts to prove its suitability for the routing of the new cables to the substation. Subsequently, SES carried out strengthening works to the structure of the building to enable the cable and containment to be safely supported. SES installed the containment and the cables in the warehouse building to the substation to complete the contract.

SES provided technical support, operational management, skilled operatives, plant, equipment and all materials, safely delivering the project for the client, completing all construction activities to a high standard whilst ensuring health and safety compliance at all times. The project was delivered under critical time constraints outside of the mine's production hours.

Gallery



For further information about our Shaft Work services, please contact us on 01302 756800

